

LevelPro® — ProAlert® 2

Industrial Visual | Audible Sentry Alarm

ProAlert®

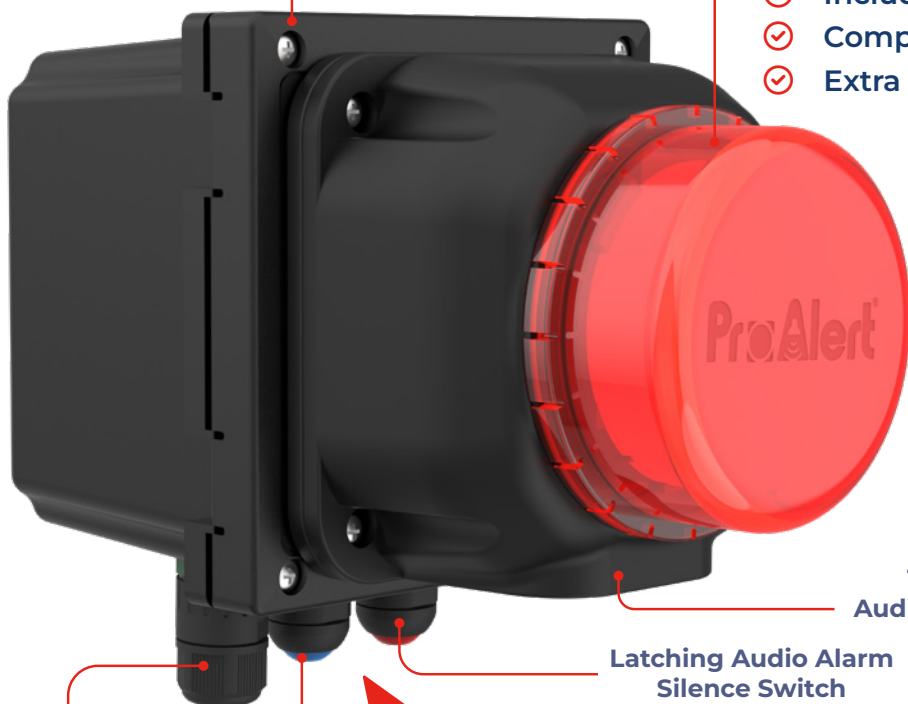
The Next Big Thing in Liquid Monitoring

Features

- ✓ High Intensity Red Alarm Light (Optional Blue Lens)
- ✓ Pulse to Relay Output
- ✓ Super Loud 108dB Audible Alarm
- ✓ Silence Function | Light Remains On
- ✓ Rugged NEMA 4X Industrial Enclosure
- ✓ External Wall Mounting Brackets
- ✓ High Impact Plastic Polycarbonate Shell
- ✓ Includes 6' Power Cord + Watertight Cord
- ✓ Completely Pre-Wired
- ✓ Extra Output Contact to Remote Alarm or PLC

All Plastic
NEMA 4X
Enclosure

Built in
Visual Alarm



108dB
Audible Alarm

Latching Audio Alarm
Silence Switch



Alarm Test



Flow



Liquid Level



Analytical



Pressure

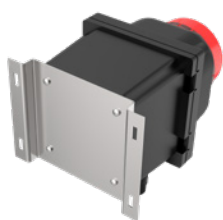


Leak
Detection



Optional Blue Lens
for Enhanced Visibility

3 Easy Mounting Options



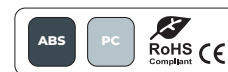
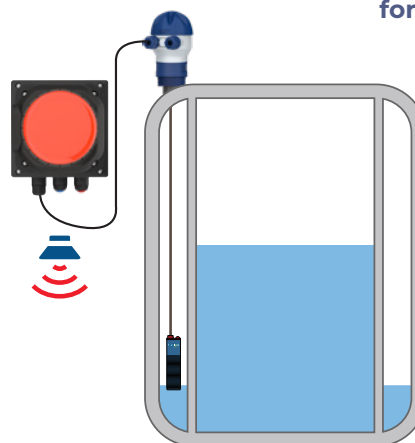
Wall Mount



Panel Mount



Pole/Pipe Mount



Typical Applications

- ✓ High High | Low Level Indication for Tanks | Sumps
- ✓ Bag | Filter Change Out
- ✓ Leak Detection
- ✓ Flow | No Flow Sensors | Pump Protection
- ✓ Upset Condition Notification

Specifications

- ✓ Dimensions | 7" X 5" X 4.5"
- ✓ Enclosure | NEMA 4X
- ✓ Weight | 2.1 lbs.
- ✓ 24VDC
- ✓ 100 - 240VAC (with DC adapter)

Model Selection

ProAlert® PA223

- PNP | NPN | Dry Contact Input
- Audible | Visual Alarm

ProAlert® PA223-PR

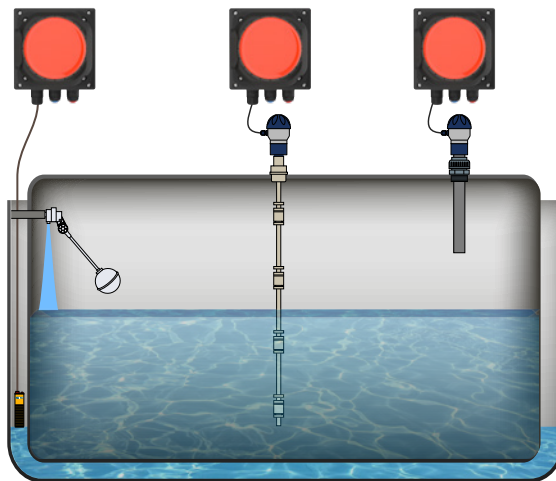
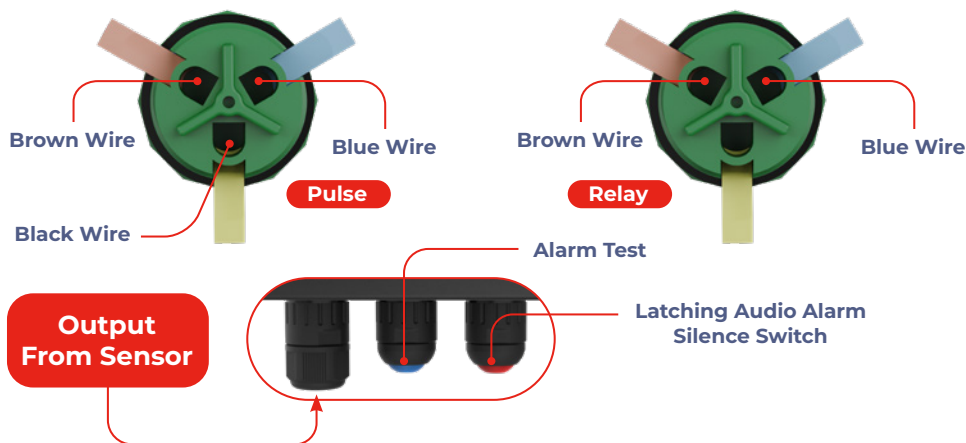
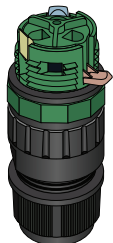
- PNP | NPN | Dry Contact Input
- 10AMP AC | 10AMP DC Relay Output
- Audible | Visual Alarm

ProAlert® PA223-LD

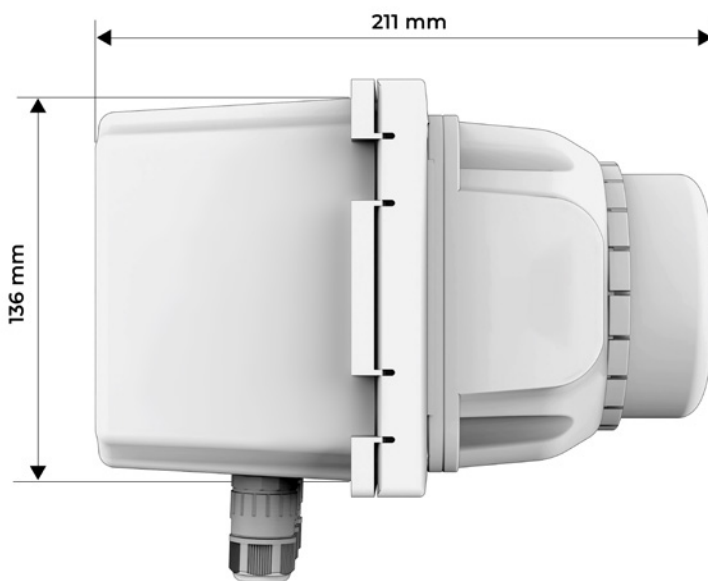
- PNP | NPN | Dry Contact Input
- Audible | Visual Alarm
- Leak Detection Module for Leak Detection Cable

Add suffix "-B" for blue lens

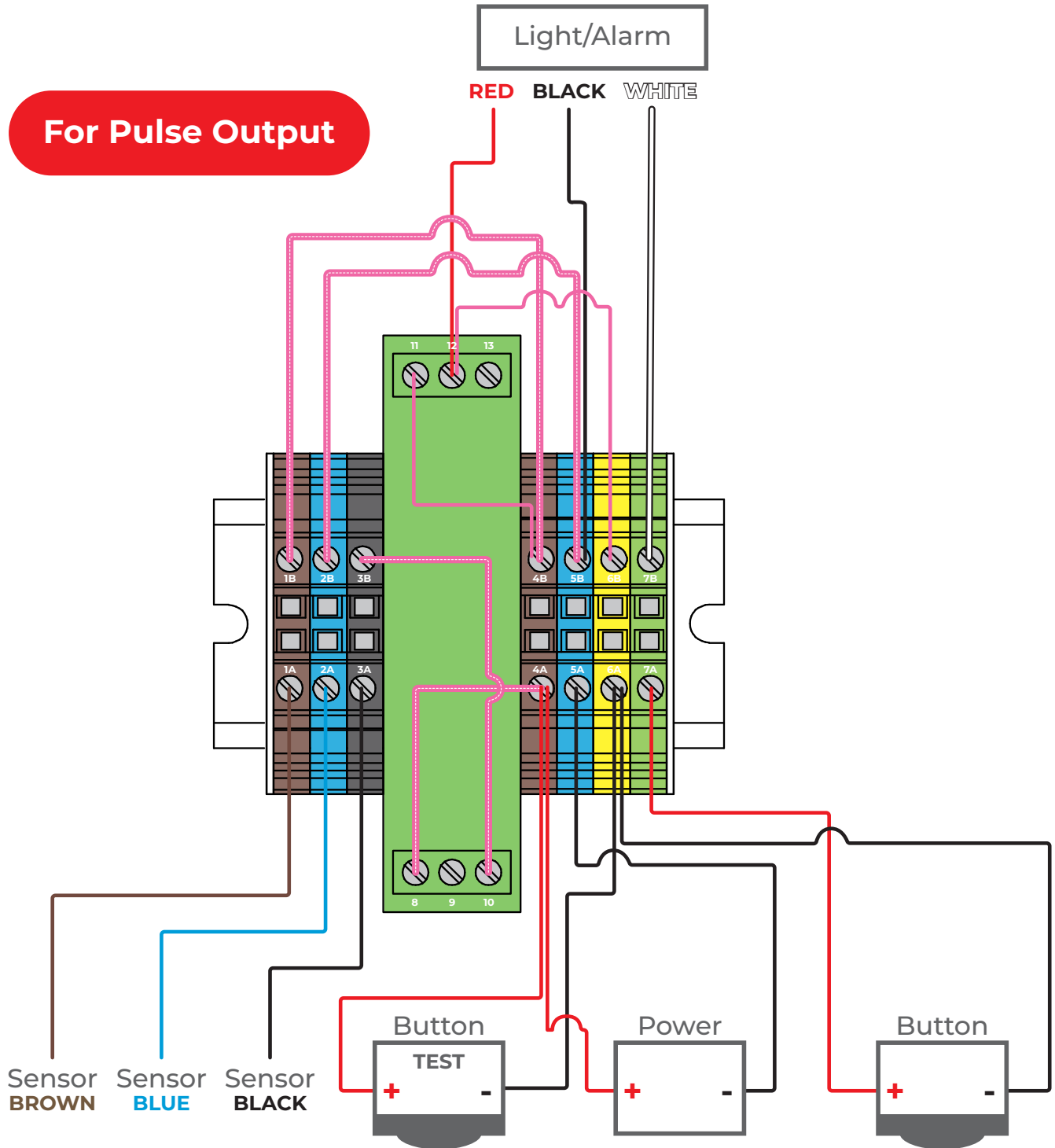
Wiring Diagram



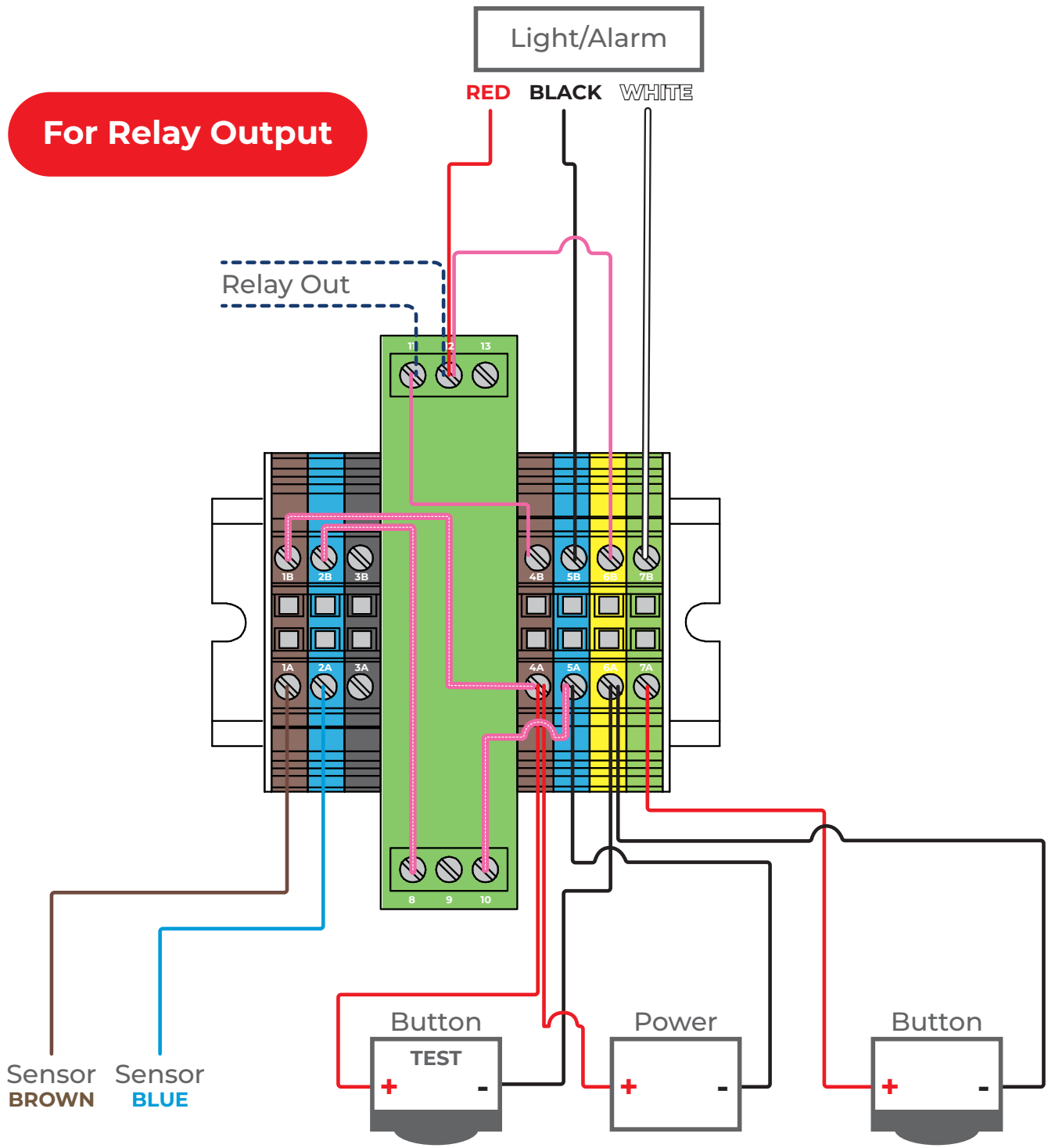
NOTE: The ProAlert® 2 can be used in more than just leak detection applications. It is an excellent high/low level alarm or any other upset condition.



Wiring Diagram

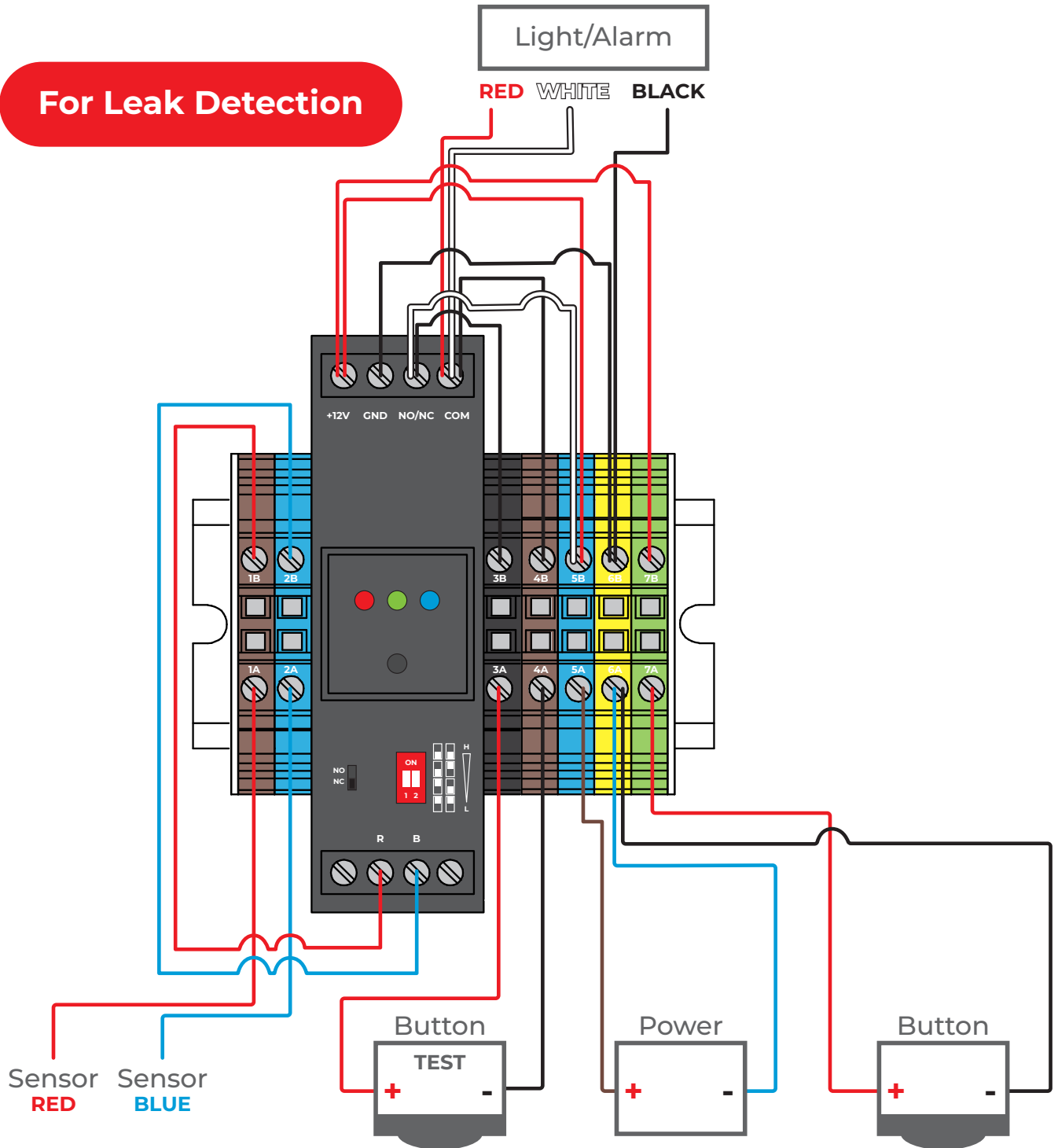


Wiring Diagram

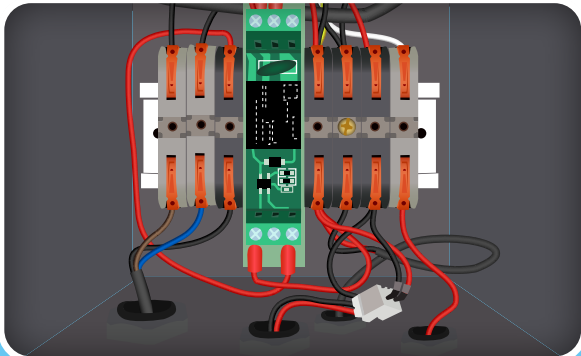


Wiring Diagram

For Leak Detection

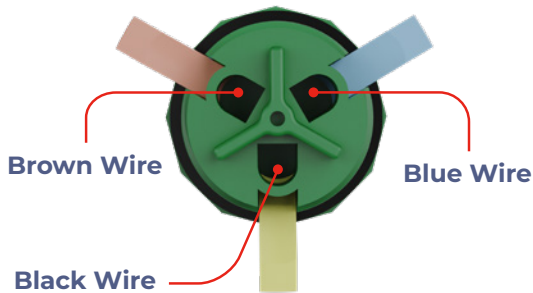


Setup for LDS-YN Leak Detection



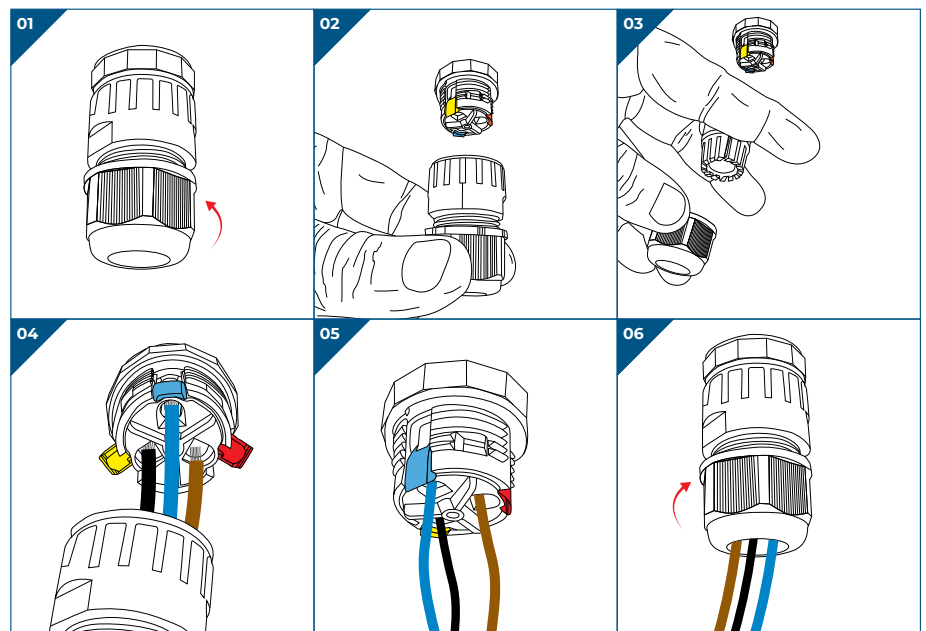
PRE-WIRED
NO INTERNAL WIRING NECESSARY

Inside the Pro-Alert® 2 box, the P2R relay has been prewired to a quick connect which the LDS-YN Leak Sensor will connect to.



From the LDS-YN Sensor there is a Blue, Black, and Brown wire and they should attach as follows:

- Blue sensor wire will connect to the Blue quick connect terminal.
- Black sensor wire will connect to the Yellow quick connect terminal.
- Brown sensor wire will connect to the Orange quick connect terminal.



Troubleshooting:

If the sensor is not working properly follow the following steps:

1. If sensor is in constant state of alarm — Place sensor 4" above a cup of water and turn the potentiometer until the system quits alarming. This will calibrate the sensor to detect a liquid 4" from contact.
2. This unit does not provide a 120v output to run to a PLC/Skada system. It only provides a 12-14v output.

